

# The NERA Researcher

## The President's Message



John Young

Dear NERA Colleagues,

I hope that you are having a good year so far, both professionally and personally. Since my last message to you, there have been a number of positive developments for NERA that I would like to share with you. I'd like to welcome Haifa Matos-Elefonte from the College Board as the new co-editor of the NERA Researcher. Haifa takes over this role from her College Board colleague, Maureen Ewing, who served admirably for the past three years. Also, Bo Bashkov continues in his role as the other co-editor.

The NERA Executive Committee and the Board of Directors had a very productive and engaging winter meeting at the Marriott Hotel in Trumbull, Connecticut at the end of January. For most of us, it was the first visit to the new location of our Annual Conference and everyone seemed to be very excited and pleased with the facilities and staff. We look forward to having our meetings and conference there for the next several years. The call for proposals is now available and I encourage you and your colleagues to submit for this year's conference.

One of the outcomes from the winter meeting was a decision to combine two of the existing NERA committees into the newly-created Teacher-as-Researcher Issues Committee. This committee is ably chaired by Salika Lawrence of William Paterson University, and the members of her committee are Ellina Chernobilsky, Francine Falk-Ross, Carrie Hong, Cara McDermott and Kristen Miller. They are charged with two major initiatives: (1) to select the annual recipient of the Teacher-as-Researcher award; and (2) to develop and implement plans to increase the participation of teachers and teacher researchers within NERA, including at our Annual Conference. In addition, the Diversity Committee has been re-invigorated and I have asked them to develop a vision and a strategic plan for addressing issues of diversity for NERA. I am grateful to Ellina Chernobilsky of Caldwell College for agreeing to serve as chair of this committee; her committee includes Kevin Crouse, Jennifer Randall and Caryn Terwilliger.

Another outcome from the winter meeting was a decision to change vendors for IT support for our website, membership database management, and conference proposal submission system. The Infrastructure Committee believes that our new vendor, Vieth Consulting, will be able to deliver higher quality service at a much lower price than our previous vendor. Because IT support has been the single biggest expense for NERA, the fact that we expect to save on the order of **60%** of what we had previously spent will place NERA in a much better financial situation. Thanks to Peter Swerdzewski for leading this effort and to the other committee members, Steven Holtzman and Liz Stone.

The planning is well under way for this year's conference, "Equity and Excellence in an Era of Accountability." My very capable conference co-chairs, Pamela Kaliski, Ross Markle

*(Continued on page 3)*

## Inside this issue

Executive Committee, Board of Directors, and Appointed Positions.....	2
Message from the Editors.....	2
Member News.....	3
Call for Nominations.....	3
Call for Proposals.....	4
Session-Specific Guidelines – 2014 NERA Conference .....	5
45th Annual Conference Overview/Welcome.....	7
Frequently Asked Questions.....	8
Special Call for P-12 Presenters & Teacher-as-Researcher Award.....	11
Call for Nominations for the Thomas F. Donlon Award.....	12
Call for Nominations for the Leo D. Doherty Award.....	13
NERA Communications Committee Report.....	13
Membership Committee Update.....	13
The Graduate Lounge .....	14



## The NERA Researcher

The NERA Researcher is the official newsletter for members of the Northeastern Educational Research Association.

## Message from the Editors

Greetings NERA Members!

I would like to take this opportunity to introduce myself. My name is Haifa Matos-Elfonte and I will be serving as co-editor along with Bo Bashkov on *The NERA Researcher*. I am truly honored to serve in this role and look forward to ensuring the delivery of an informative newsletter! I would like to thank John Young for appointing me to this role, Maureen Ewing for providing guidance as I transitioned into my new responsibilities and Bo Bashkov for getting me up to speed on the newsletter process!

Bo and I are so excited to share this issue of *The NERA Researcher*. As you've read in our president's message, we are off to a great start this year! In this issue you will find a plethora of information on the 45<sup>th</sup> Annual Conference. Our conference co-chairs, Pamela Kaliski, Ross Markle, and Javarro Russell have provided a conference overview and welcome message, the conference Call for Proposals, Session Specific Guidelines, along with frequently asked conference questions. Within this issue you will also find information on several awards that NERA bestows on deserving members each year. These awards offer a wonderful opportunity to acknowledge a colleague and/or mentor who have made an impact on the field. Please read through the newsletter and consider submitting award nominations!

Lastly, Bo and I would like to give special thanks to Barbara Helms for her past, current, and future reviews of the newsletter. We greatly appreciate having an extra set of eyes on *The NERA Researcher*. Thank you!

Haifa and Bo  
The Editors

## Executive Committee

**President:**  
John W. Young  
*Educational Testing Service*  
[jwyoung@ets.org](mailto:jwyoung@ets.org)

**Past President:**  
Darlene Perner  
*Bloomsburg University of Pennsylvania*  
[dperner@bloomu.edu](mailto:dperner@bloomu.edu)

**President-Elect:**  
April Zenisky  
*University of Massachusetts Amherst*  
[azenisky@educ.umass.edu](mailto:azenisky@educ.umass.edu)

**Secretary:**  
Jennifer Kobrin  
*Pearson*  
[Jennifer.kobrin@pearson.com](mailto:Jennifer.kobrin@pearson.com)

**Treasurer:**  
Elizabeth Stone  
*Educational Testing Service*  
[estone@ets.org](mailto:estone@ets.org)

**President Advisor on Special Projects:**  
Steven Holtzman  
*Educational Testing Service*  
[sholtzman@ets.org](mailto:sholtzman@ets.org)

## Board of Directors

Charles DePascale (2011-2014)  
*National Center for the Improvement of Educational Assessment*  
[cdepascale@nceia.org](mailto:cdepascale@nceia.org)

Abigail Lau (2012-2015)  
*Emmanuel College*  
[laua@emmanuel.edu](mailto:laua@emmanuel.edu)

Rochelle Michel (2012-2015)  
*Educational Testing Service*  
[rmichel@ets.org](mailto:rmichel@ets.org)

Dena Pastor (2011-2014)  
*James Madison University*  
[pastorda@jmu.edu](mailto:pastorda@jmu.edu)

Javarro Russell (2013-2016)  
*Educational Testing Service*  
[jruessell@ets.org](mailto:jruessell@ets.org)

Kristen Smith (2013-2014)  
*James Madison University*  
[smith4kl@jmu.edu](mailto:smith4kl@jmu.edu)

Craig Wells (2013-2016)  
*University of Massachusetts Amherst*  
[cswells@educ.umass.edu](mailto:cswells@educ.umass.edu)

## Appointed Positions

**2014 Conference Co-Chairs:**  
Pamela Kaliski  
*The College Board*  
[pkaliski@collegeboard.org](mailto:pkaliski@collegeboard.org)

Ross Markle  
*Educational Testing Service*  
[rmarkle@ets.org](mailto:rmarkle@ets.org)

Javarro Russell  
*Educational Testing Service*  
[jruessell@ets.org](mailto:jruessell@ets.org)

**2015 Conference Co-Chairs:**  
Kimberly Colvin  
*Massachusetts Institute of Technology*  
[kfcvolvin@gmail.com](mailto:kfcvolvin@gmail.com)

Katrina Crotts  
*Educational Testing Service*  
[kcrotts@ets.org](mailto:kcrotts@ets.org)

Amanda Soto  
*National Board of Medical Examiners*  
[amandascoto@gmail.com](mailto:amandascoto@gmail.com)

**The NERA Researcher Co-Editors:**  
Haifa Matos-Elfonte  
*The College Board*  
[hmatoselefote@collegeboard.org](mailto:hmatoselefote@collegeboard.org)

Bo Bashkov  
*James Madison University*  
[bo.bashkov@gmail.com](mailto:bo.bashkov@gmail.com)

**NERA Webmaster:**  
Tia Sukin  
*Pacific Metrics*  
[tsukin@pacificmetrics.com](mailto:tsukin@pacificmetrics.com)

**NERA Conference Proceedings Co-Editors for Digital Commons:**  
Xing Liu  
*Eastern Connecticut State University*  
[liux@easternct.edu](mailto:liux@easternct.edu)

Jim McDougal  
*University of Massachusetts*  
[jemcdougal@aol.com](mailto:jemcdougal@aol.com)

**Mentoring Program Co-Chairs:**  
TBA

### STANDING COMMITTEES

**Communications Chair:**  
Jonathan Steinberg  
*Educational Testing Service*  
[jsteinberg@ets.org](mailto:jsteinberg@ets.org)

**Membership Chair:**  
Jason Kopp  
*James Madison University*  
[koppjp@dukes.jmu.edu](mailto:koppjp@dukes.jmu.edu)

**Graduate Student Issues Chair:**  
Kristen Smith  
*James Madison University*  
[smith4kl@jmu.edu](mailto:smith4kl@jmu.edu)

**Nominations Chair:**  
Darlene Perner  
*Bloomsburg University of Pennsylvania*  
[dperner@bloomu.edu](mailto:dperner@bloomu.edu)

**Teacher-as-Researcher Issues Chair:**  
Salika Lawrence  
*William Paterson University*  
[lawrenceS2@wpunj.edu](mailto:lawrenceS2@wpunj.edu)

### AWARDS COMMITTEES

**Thomas Donlon Mentoring Award Chair:**  
Felice D. Billups  
*Johnson & Wales University*  
[fbillups@jwu.edu](mailto:fbillups@jwu.edu)

**Leo D. Doherty Memorial Award Chair:**  
Kristen Huff  
*Regents Research Fund*  
[khuff@mail.nysed.gov](mailto:khuff@mail.nysed.gov)

**Lorne H. Woollott Distinguished Paper Chair:**  
Claire Mastromonaco  
*City of Bridgeport*  
[mastrodance@aol.com](mailto:mastrodance@aol.com)

### AD HOC COMMITTEES

**Infrastructure Chair:**  
Peter Swerdzewski  
*The Regents Research Fund*  
[pswerdz@me.com](mailto:pswerdz@me.com)

**Site Selection Chair:**  
April Zenisky  
*University of Massachusetts Amherst*  
[azenisky@educ.umass.edu](mailto:azenisky@educ.umass.edu)

**Strategic Planning Chair:**  
Darlene Perner  
*Bloomsburg University of Pennsylvania*  
[dperner@bloomu.edu](mailto:dperner@bloomu.edu)

**Peer Review Process Chair:**  
Javarro Russell  
*Educational Testing Service*  
[jruessell@ets.org](mailto:jruessell@ets.org)

**Diversity Chair:**  
Ellina Chernobilsky  
*Caldwell College*  
[echernobilsky@caldwell.edu](mailto:echernobilsky@caldwell.edu)

**Connecting Research to Practice Chair:**  
Gilbert Andrada  
*Connecticut State Department of Education*  
[gilbertandrada@ct.gov](mailto:gilbertandrada@ct.gov)

**Conference Ambassadors Chair:**  
Rochelle Michel  
*Educational Testing Service*  
[rmichel@ets.org](mailto:rmichel@ets.org)

(Continued from page 1)

and Javarro Russell, have been holding weekly conference calls to discuss all aspects of the upcoming conference. As a reminder, the conference will feature Jonathan Alger, President of James Madison University, as the keynote speaker. In addition, Andrew Ho, from Harvard University, and Michael Kane, from the Educational Testing Service, have agreed to be invited speakers at the conference. In a new format, Past President Kristen Huff will host an interview of Wayne Camara, the Senior Vice President for Research at ACT, on the challenges of transitioning to the Common Core State Standards and the new assessment systems.

The major goal for my presidential term has been to identify and implement new ways to add year-round value to your NERA membership. One of my initiatives is now well-established: NERA is hosting webinars on a bi-monthly basis on topics of interest to members. The first webinar, targeted to the NERA graduate student members, focused on applying for summer internships and drew 30 participants. The second webinar, led by Ross Markle from ETS, focused on the science of non-cognitive skills and their assessment. This webinar was extremely popular and drew more than 50 attendees. The third webinar will be held on April 23rd and will be hosted by Felice Billups from Johnson and Wales University. The title of her presentation is "Taking the Mystery Out of Qualitative Data Analysis". I am grateful to Ross and Felice for their willingness to share their expertise with NERA members. Also, please send me, or Steven Holtzman ([sholtzman@ets.org](mailto:sholtzman@ets.org)), my Presidential Advisor on Special Projects, any ideas or topics you may have for future webinars.

As we complete the transition to our new IT vendor, we will post the presentations and recordings of the webinars on the NERA website. I am also planning to create a NERA discussion board so that members can exchange questions and answers. In addition, I plan to implement a mentoring database so that members can identify and connect with possible mentors/mentees.

Lastly, since no one correctly identified the location of my photo in the last newsletter (it was taken at Point Lobos State Reserve, on the California coast between Carmel and Big Sur), I'll make the same offer of two free drinks (on me) at this year's conference to the first person who can correctly identify the location of this photo! As always, please consider serving NERA in some capacity and feel free to contact me at [jwyoung@ets.org](mailto:jwyoung@ets.org).

## Call for Nominations

We are seeking nominations for the following open elected positions:



- NERA President (3-year term as President-elect, President, Past President)
- NERA Secretary (3-year term)
- NERA Board Member (3-year term) – two (2) positions available

We have many great members who can help keep NERA going strong but we need you to nominate them. Please send your nominations for President, Secretary, and Board Members to Darlene Perner, NERA Past President at [nominationscommittee@nera-education.org](mailto:nominationscommittee@nera-education.org) by **May 15**. All nominees must be current members of NERA. Please consider nominating yourself or a colleague for these important positions.

## Member News

**John W. Young** (Educational Testing Service) is now the Research Coordinator for the Graduate Record Examinations (GRE). He is responsible for setting the GRE long-range research agenda and for managing the 20+ current GRE research projects. This role aligns with his main research area, admissions testing in higher education.

Our colleagues, **Carol Barry** and **Haifa Matos-Elefante**, were recently promoted to Associate Research Scientists within the K-12 research team at the College Board.

The Center for Assessment & Research Studies (CARS) at James Madison University was pleased to welcome visiting scholar, **Christiane Penk**, M.A., from Humboldt University in Berlin, Germany. Ms. Penk is employed as a research associate at the Institute for Educational Quality Improvement (IQB), which conducts many studies of Germany's 16 Federal States to assure standards are met. These studies are conducted in addition to studies on international assessments such as the PIRLS, TIMSS, and PISA. Ms. Penk is a PhD student and received a scholarship to enjoy a two-month residency at CARS where she has been attending a few classes, working on her research, and sharing ideas on test-taking motivation with JMU faculty and graduate students. Her PhD topic pertains to *Effects of Test-Taking Motivation in Large-Scale Assessments*. Christiane attended the AERA conference in Philadelphia where she presented her research in a symposium on examinee motivation prior to her return home. Look for this budding scholar's authorship on future publications of international educational research.

The Assessment & Measurement PhD program at James Madison University celebrated the successful dissertation defenses of 3 doctoral students.

On February 28, 2014, **Daniel Jurich** (advised by Christine DeMars) defended his dissertation titled: *"Assessing Model Fit of Multi-dimensional Item Response Theory and Diagnostic Classification Models using Limited-Information Statistics."*

On March 28, 2014, **Jason Kopp** (advised by Sara Finney) defended his dissertation titled: *"The Treatment of Missing Data when Estimating Student Growth with Pre-Post Educational Accountability Data."*

On March 31, 2014, **Alan Socha** (advised by Christine DeMars) defended his dissertation titled: *"An Investigation of the Effects of Complex Items on Augmented Subscores."*

### Recent publications:

Knight, S. L., Parker, D., Zimmerman, W., & Ikhlef, A. (2014). Investigating the relationship between perceived and observed student-centered learning environments in Qatari elementary math and science classrooms. *Learning Environments Research*, 17(1), 29-47. DOI: [10.1007/s10984-014-9156-z](https://doi.org/10.1007/s10984-014-9156-z)

Swerdlow, M. (2014). The view from the passenger seat: The real effect of New York's new APPR on public education in New York. *Impact on Instructional Improvement*, 38(1), 1-10.

(Continued on page 13)

## **Call for Proposals**

### **45th Annual Conference**

**October 22-24, 2014**

**Marriott Hotel, Trumbull, Connecticut**

---

#### **Conference Theme: *"Equity and Excellence in an Era of Accountability"***

Despite years of research, policy debates, and program refinements, inequality of opportunity continues to be one of the major problems in the United States today. Perhaps the most important reason for this lack of equality of opportunity is the quality and quantity of education that students receive. While racial segregation in society and schools has decreased, economic segregation has increased. The achievement gap between poor and rich students born at the beginning of this century is now about one-third larger than for those born 25 years earlier. In an era of greater educational accountability, what can and should we do, as educators and researchers, to help reduce inequalities of opportunity and to ensure equity and excellence for all students?

As a regional affiliate of the American Educational Research Association, NERA invites proposals for our annual meeting spanning all areas of educational research. We welcome proposals from new and experienced researchers and will consider both completed and in-progress research. Below you will find the general requirements for NERA proposals as well as specific guidelines corresponding to the four session formats. For more information about the conference, including FAQs about NERA proposals, visit NERA at [www.nera-education.org](http://www.nera-education.org).

#### **Submission Requirements**

*Please keep in mind that should your proposal be accepted for presentation, the information will appear in the final program exactly as you have provided during the submission.*

- Complete information for author(s)
- Affiliation information
- Descriptive title of 15 words or less
- Three keywords
- Abstract of 120 words or less
- Description of the proposal in **1000 words or less**, not including tables, figures, and references.
- Summaries of research should include: study purpose, theoretical framework, methodology, results, conclusions and educational implications. **Warning:** Proposals or full papers with more than 1000 words will not be accepted as conference proposals.

#### **Submission Format**

The proposal submission form will be online and accessible from the NERA website by May 1st, 2014. At the time of submission, authors will be required to select from a list of descriptive keywords to categorize the proposal.

#### **Submission Review Process**

- Proposals must be submitted electronically by **June 6th, 2014**
- 2-3 NERA members will blindly review proposals.
- Proposals will be judged according to the following criteria: educational or scholarly significance, perspective or theoretical framework, appropriateness of methodology, clarity of expression, and appeal to NERA membership.
- Proposal decisions will be emailed to first-authors in mid-August. Details about session dates and times will follow after as the program is completed.

## Session-Specific Guidelines – 2014 NERA Conference

When submitting your proposal, you will be asked to indicate which of the following session formats you prefer for your research. We encourage submitters to select more than one possible option, as selecting multiple options increases your likelihood of acceptance. Regardless of the session you choose, your paper will be subjected to rigorous peer review by NERA volunteers. As each format provides a medium for contributing your research to the field, all session formats are equally important. We hope to maintain a variety of sessions this year to maximize the educational experience for NERA members.

### **1. Individual Paper Presentation:**

Proposals should describe completed or nearly completed research to be presented in 10-15 minutes. Sessions will be organized so that 3-5 other individual presentations will be grouped according to similar research areas. In most paper sessions, a Discussant will be assigned to read the set of papers in advance and present a 10-15 minute synthesis, critique, or analysis of the set of papers to spur discussion.

### **2. Theme-Based Paper Session/Symposium:**

Proposals should describe a set of 3-5 presentations organized around a common theme. The Chair and Discussant for this session must be identified in the proposal. The format and procedure for these sessions are identical to the Individual Paper Presentation sessions.

### **3. Individual Poster:**

Proposals should describe a research project, either completed or nearly completed, that lends itself to a visual display and would benefit from informal individualized discussion and feedback. Similar to the individual paper presentations, each poster will have a Discussant. Specific directions for the size of the poster will be posted on the NERA Conference website.

### **4. Roundtable Session:**

Roundtable sessions allow maximum interaction among presenters and attendees. There is greater emphasis on discussion between the authors and participants during a roundtable session. Each table will have 3-5 researchers of accepted papers clustered around shared interests. Each session will have a designated Chair knowledgeable about the research area, to facilitate interaction and participation, and when appropriate a Discussant will be assigned to a roundtable session as well.

### **Special call for teacher researchers!**

This year, we are featuring a special call for teacher researchers to attend NERA and present their research. Please contact Salika Lawrence for more information about this special call at [LawrenceS2@wpunj.edu](mailto:LawrenceS2@wpunj.edu), or by visiting the NERA website in early April.

Please complete the form at <https://www.surveymonkey.com/s/NERAvol2014> if you are interested in volunteering to serve as a submission reviewer, session chair, or session discussant.

If you have any questions, please contact the conference co-chairs at [NERAconference2014@gmail.com](mailto:NERAconference2014@gmail.com).

Thank you,

Pamela Kaliski, *The College Board*  
Ross Markle, *Educational Testing Service*  
Javarro Russell, *Educational Testing Service*  
NERA 2014 Conference Co-Chairs

Follow us on Twitter! @NERAconference



"Like" NERA on Facebook!

NERA – Northeastern Educational Research Association



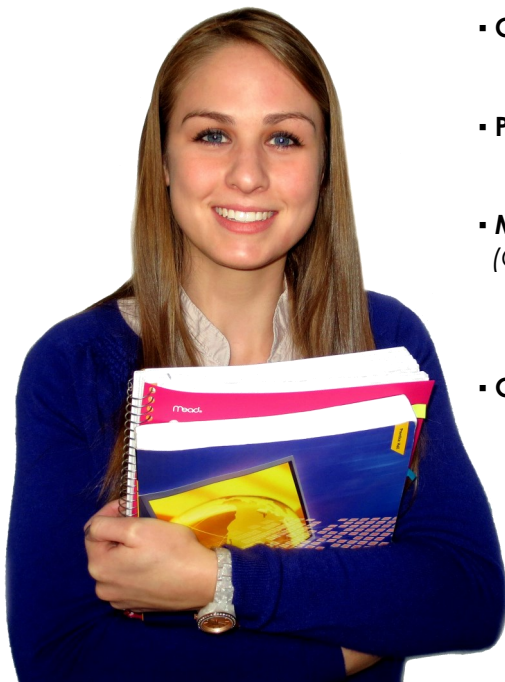
Network with NERA members using our LinkedIn group page!







# THE CENTER FOR ASSESSMENT & RESEARCH STUDIES



- **Center for Assessment & Research Studies**  
<http://www.jmu.edu/assessment>
- **Ph.D. Program in Assessment & Measurement**  
<http://www.psyc.jmu.edu/assessment/>
- **M.A. in Psychological Sciences**  
(Quantitative Concentration)  
<http://www.psyc.jmu.edu/psycsciences/quantitativepsyc.html>
- **Graduate Certificate in Higher Education Assessment**  
<http://www.jmu.edu/outreach/assessment.shtml>

MSC 6806  
Harrisonburg, VA 22807  
assessment@jmu.edu  
Phone: 540.568.6706  
Fax: 540.568.7878



JOHNSON & WALES  
UNIVERSITY

1914

## IMPACT EDUCATION AT JWU

Ed.D. in Educational Leadership

EDUCATIONAL LEADERSHIP PROGRAM  
Alan Shawn Feinstein Graduate School

For more information, call 401-598-1993 or visit [www.jwu.edu/grad](http://www.jwu.edu/grad).



JWU alum **KARIN EDWARDS**

has worked at public and private two- and four-year institutions for the majority of her career in education.

Edwards has served in several leadership positions including nine years as senior student affairs administrator and nine years as a senior-level administrator outside of student affairs.

She currently serves as the dean of student development at Three Rivers Community College in Norwich, Conn.

## 45th Annual Conference Overview/Welcome

Hello NERA Members.

We have begun planning for the 2014 NERA conference — at the all-new location, the Marriott in Trumbull, CT — and we couldn't be more excited. We hope that you are planning to attend the conference this year, and that you will encourage other colleagues and friends to attend as well. Among the many great things we have planned, we are particularly excited about the featured sessions that have been confirmed. Specifically, there will be 6 pre-conference and in-conference workshops offered this year, on the following topics:

- Think aloud protocols/cognitive interviews (Kadriye Ercikan & Juliette Lyons-Thomas)
- In-depth interviewing as qualitative research (Irv Seidman)
- Item analysis using jMetrik software (J. Patrick Meyer)
- Using and programming in R (Monica Erbacher)
- Hierarchical linear modeling (Michael Chajewski)
- Preparing classroom teachers to succeed with second language learners (Thomas Levine and David Moss)

Additionally, our keynote and other invited speakers include an array of talented, engaging, and well-known figures from across the field of education. They include:

- Keynote Speaker: President Jonathan Alger, *James Madison University*
- Keynote Interview with Wayne Camara, *ACT* (interviewed by Kristen Huff)
- Invited Speaker: Michael Kane, *Educational Testing Service*
- Invited Speaker: Andrew Ho, *Harvard University*

This is an impressive set of speakers who we are thrilled to have on our program!

You can find our Call for Proposals as well as Frequently Asked Questions (FAQs) on the following pages in this newsletter. Our proposal system will open in early May and you will have until **June 6th** to submit your proposals. Please do not hesitate to contact us with questions, comments, or ideas.

Best,

The 2014 NERA Conference Team:

Pamela Kaliski

Ross Markle

Javarro Russell

You can also stay up-to-date with conference announcements and deadlines by engaging with us through social media:



Follow us on Twitter!  
@NERAconference



"Like" NERA on Facebook!  
NERA – Northeastern Educational Research Association



Network with NERA members using our  
LinkedIn group page!

# Frequently Asked Questions

45th Annual Conference

October 22-24, 2014

Marriot Hotel, Trumbull, Connecticut

**Conference Theme:** *"Equity and Excellence in an Era of Accountability"*

## **Does my research project have to be complete to be accepted to NERA?**

Not necessarily. In progress or nearly completed research will be considered for the conference, but the research should show the potential of being ready for presentation by the date of the conference. We encourage proposers to strongly consider submitting their in progress work as Roundtable presentations. This format facilitates greater discussion between participants and the audience, allowing you to receive input and feedback that could inform your research or help to overcome potential hurdles.

## **How are the proposal descriptive keywords used?**

These terms are used in several ways. Specifically, these will be used to match the proposals to the appropriate reviewers, to place the proposals in the best-fitting sessions, and to assign appropriate discussants to the sessions. Please select the descriptor that is the best match to your proposal as your first choice and two additional descriptors as next-best options.

## **What is the review process like?**

Reviewers are volunteers, who have self-identified as being willing to review proposals in the same topic areas as the proposal keywords. The program committee, according to the reviews and availability in the conference program, makes final decisions.

## **When will my research paper need to be ready?**

Discussants must be able to review research papers prior to the sessions in order to properly prepare for discussions. You will be asked to email your research papers to the Discussants by October 1.

## **Will a projector and laptop be available in my session?**

Institutional sponsors will be supplying LCD projectors for each session. Arrangements only need to be made to have a laptop present at the session. The Chair of the session will arrange the laptop and file transfers to the laptop by email before the session. Presenters are expected to cooperate with Chair requests.

## **How do I prepare a free-standing poster?**

Posters will need to be able to stand up on a table since no boards or easels are available at the hotel. Tri-fold foam or corrugated display boards are portable and inexpensive. They can be purchased at most office supply stores. Directions as to the size of the posters will be posted on the NERA website.

## **What if I am accepted to NERA but I am unable to attend the NERA conference?**

Submitting to NERA represents a commitment that you intend to attend the conference if accepted. If something prevents you from being able to attend, and co-authors or colleagues cannot present in your place, you must withdraw your presentation *before* the session by emailing [NERAconference2014@gmail.com](mailto:NERAconference2014@gmail.com).

## **You have several session options for submitting proposals. Are any considered less rigorous than others?**

No. The rigor of the peer review process is the same for **all** proposals submitted to the conference. Peer review allows NERA to maintain an appropriate level of quality for the experience of those presenting their research, as well as those receiving the research.

## **What is the role of the Chair?**

The role of the Chair is to facilitate the organization of the presentation session. Duties may include collecting the papers, communicating with authors, managing audio/visual equipment, and ensuring the timeliness of the session. In some cases, the Chair would assist in facilitating discussion among the audience members and authors.

## **What is the role of the Discussant?**

The Discussant is responsible for drawing from his/her expertise to comment on papers and presentations. The goal is to provide professional and constructive criticism and raise issues for broader consideration that connect to these works.

## **What are the conference registration fees?**

The conference registration fees will be: Professionals \$85; Retirees \$20; Students \$30. Late fees will be instituted after October 1. All registrants must also be NERA members. Information about membership and dues can be found on the NERA website ([www.nera-education.org](http://www.nera-education.org)).

## **Are my registration fees adjusted if I just come for one day or part of a day?**

NERA makes great effort to keep registration fees as low as possible for all attendees; therefore, it is not possible to provide adjusted registration fees for partial attendance.

## **What is included in the Conference Hotel?**

The conference will be held at the Trumbull Marriott Merritt Parkway in Trumbull, CT. For the conference, the hotel offers several different accommodation rates: single, double, triple and quad rooms. The rate for conference rooms includes all meals during the conference. Rates for the hotel will be posted on the website in the summer.

## **How will I submit my NERA proposal?**

An online submission system to submit proposals will open in early May.

If you have any further questions, please contact the conference co-chairs at [NERAconference2014@gmail.com](mailto:NERAconference2014@gmail.com).

Thank you,

Pamela Kaliski, *The College Board*  
Ross Markle, *Educational Testing Service*  
Javarro Russell, *Educational Testing Service*  
NERA 2014 Conference Co-Chairs

Follow us on Twitter! @NERAconference



"Like" NERA on Facebook!

NERA – Northeastern Educational Research Association



Network with NERA members via our LinkedIn page!





## edCount is pleased to sponsor NERA in 2013

**Standards,  
Assessment and  
Accountability**

**Instructional  
Systems and  
Capacity Building**

### Practice Areas

**English Learners**

### Services

**Assessment  
Implementation  
and Evaluation**

**Students with  
Disabilities**

**Policy  
Evaluation and  
Support**



edCount LLC  
5335 Wisconsin Ave NW, Suite 440  
Washington, DC 20015

(202) 895-1502  
info@edCount.com  
www.edCount.com

### BLOOMSBURG UNIVERSITY OF PENNSYLVANIA



**A national leader in integrating  
positive behavior support  
in pre-teacher education.**

Learn more: [www.bloomu.edu/coe](http://www.bloomu.edu/coe)



## Institute for Translational Research

Community-engaging research and scholarship

Through three distinct yet integrated content centers,  
faculty and students have the opportunity to  
participate in the civic life of our community.

- Center for Learning and Professional Education
- Center for Health, Care, and Well-Being
- Center for Public Health and Education Policy

Learn more about our research activities  
[www.hartford.edu/enhp/itr](http://www.hartford.edu/enhp/itr)

Contact us  
[itr@hartford.edu](mailto:itr@hartford.edu)

*Excellence through Relevance*

**UNIVERSITY OF HARTFORD**

COLLEGE OF EDUCATION,  
NURSING AND HEALTH PROFESSIONS



[www.pace.edu/soe](http://www.pace.edu/soe)



**FORDHAM UNIVERSITY**  
GRADUATE SCHOOL OF EDUCATION



**BUROS**  
Center for Testing

## Special Call for P-12 Presenters & Teacher-as-Researcher Award

The Northeastern Educational Research Association (NERA) extends a call for teacher-researchers to present their work at the 45th Annual Conference in October 2014. We encourage teachers, professional learning teams, coaches, school administrators, and other stakeholders to submit proposals. Proposals can focus on completed research projects or works in progress. Please refer to the Call for Proposals for more information. Consider submitting proposals based on students' learning goals, growth targets, and teacher artifacts that show evidence of practice. Other hot topics include:

- Differentiating instruction
- Supporting diverse learners
- Inclusive classrooms
- Co-teaching / collaborative teaching
- Common Core State Standards
- Close reading
- Academic writing
- Technology integration
- Assessment
- Interdisciplinary planning and teaching
- Common planning
- Home-school connection
- Reading intervention and remediation
- Teacher evaluation
- Coaching

This conference is an ideal forum for teachers enrolled in graduate programs to disseminate their research. Teacher-researchers should also apply for the Teacher-as-Researcher (TAR) Award. The purpose of the award is to encourage teachers to conduct research and to use the findings of that research to inform their own teaching. The TAR award recipient is a teacher (P-12; i.e., preschool through high school) who has conducted classroom research to modify and improve his or her teaching efforts and instructional effectiveness.

Classroom teachers are invited to apply directly for this award or be nominated by NERA members, school administrators, faculty mentors, or others familiar with the teacher's research. All applications should be submitted no later than **June 30, 2014**. The application form is available at: <http://tinyurl.com/TAR2014>.

The 2014 award recipient will be invited to speak about the research project at a session at the annual October NERA meeting in Trumbull, CT and be presented with the award at that time. The award includes a plaque, NERA membership, and \$150 toward travel, meals, or lodging at the NERA conference.

All those accepted to present must register for the conference. Check the NERA website in May for information about how to register. Professional development credits for conference attendance are available. Please feel free to contact me at [LawrenceS2@wpunj.edu](mailto:LawrenceS2@wpunj.edu) with any questions.

Thanks,  
Salika Lawrence  
Chair, NERA Teacher-as-Researcher Committee



## Providing Research to Drive Innovation in Assessment

ETS's goal is to make fundamental contributions to the progress of education worldwide through educational research and analysis, fair and valid assessments, innovative product development and informative policy studies.

Learn more about our assessments and research by visiting [www.ets.org/research](http://www.ets.org/research)

Copyright © 2012 by Educational Testing Service. All rights reserved. ETS, the ETS logo and LISTENING. LEARNING. LEADING. are registered trademarks of Educational Testing Service (ETS). 21414



*Listening. Learning. Leading.®*

## Call for Nominations for the Thomas F. Donlon Memorial Award for Distinguished Mentoring

The Thomas F. Donlon Award for Distinguished Mentoring was established in 2000 in recognition of Tom's long and valued contributions to NERA, particularly as a mentor to so many colleagues. Since then the award has been presented annually to other NERA members who have demonstrated distinction as mentors of colleagues by guiding them and helping them find productive paths toward developing their careers as educational researchers.

The practice of mentoring in education has been going on for centuries and most of us can name a person who helped us move our careers along by being more than just a friend or colleague. That person may have been an advisor in developing your research agenda or perhaps brought you to NERA for the first time after suggesting that you might be ready for a conference presentation.

At this time nominations are again being sought for this annual award. Nominees must be NERA members and may be nominated by any member(s) of NERA to whom they served as mentors. If you would like to see a member of NERA who was your mentor be recognized for his/her contributions to your success, send your nomination to Felice D. Billups via email at [fbillups@jwu.edu](mailto:fbillups@jwu.edu) by **July 1, 2014**. In addition to the nomination letter, all nominations must be accompanied by at least three letters of support indicating the ways in which the nominee distinguished him/herself as a mentor. Up to five separate letters of support can be sent for each nominee. The award will be presented at the 2014 NERA conference. Please contact Felice if you have any questions about the Donlon Award or the nomination process.

leadership  
UNLEASHED

**UConn**  
NEAG SCHOOL OF EDUCATION

Ranked #17 among  
public graduate  
schools of education  
in the US.

Preston C. Green III has devoted his career to studying the sometimes surprising ways in which law and education intersect, with an eye toward helping legislators and others make better decisions when it comes to developing education policies. Dr. Green is one of 20 new faculty at the Neag School of Education poised to help make a difference in the lives of children and adults.

[www.education.uconn.edu](http://www.education.uconn.edu)



## NERA Communications Committee Report

Jonathan Steinberg  
*Educational Testing Service*

The Communications Committee has been active so far in 2014. First, I am pleased to welcome our new committee member, Joshua Marland, of the University of Massachusetts-Amherst. He has helped organize some of the databases NERA has been using and hopes to use in facilitating communications within and outside of the organization. His efforts have helped put our committee in a great position to better interact with Membership and the Conference Co-Chairs to get the word out about the 2014 Annual Conference, as well as in other capacities in support of NERA work. So thanks to Joshua, and again to Jeanne Horst and Mary Taft for all your efforts!

I am very excited to report that with help from NERA President Dr. John Young, NERA Presidential Advisor on Special Projects Steven Holtzman, the NERA Board, and most importantly for his graphics expertise, *The NERA Researcher* Co-Editor Bo Bashkov, we have completed our initial tri-fold brochure which we hope to share at the upcoming AERA/NCME Annual Conference in Philadelphia. This will greatly increase our visibility as an organization as others learn what NERA is about and what we do together for the educational research community in our region and beyond. The brochure is planned to be posted on the NERA website soon.

At last year's conference, I made an appeal to the attendees to utilize our social media outlets, Facebook and LinkedIn, to watch for important updates and to keep discussions going long after the conference and its sessions are over. There are over 500 members in our LinkedIn group and over 100 people who have "Liked" us on Facebook. We will be utilizing both of these outlets once again to publicize this year's Annual Conference and to increase our online exposure, so please spread the word about NERA on social media! We will also be posting a summary of the February 28th webinar led by 2014 Conference Co-Chair Ross Markle along with some of the questions that were asked to help in this effort.

As always, if you have any suggestions about how the Communications Committee can better serve you as NERA members, please feel free to contact me at [jsteinberg@ets.org](mailto:jsteinberg@ets.org).

## Membership Committee Update

The 2014 NERA Membership Committee is working hard to increase NERA membership and conference attendance this year. We ask each of you, as NERA members, to do your part by personally inviting at least two friends or colleagues to attend NERA this year as new members. Members who bring the most new members will win prizes!

## Member News

*(Continued from page 3)*

**Joni Lakin** (Auburn University) and **John Young** (ETS) received the 2014 AERA Division H Outstanding Publication Award in Assessment and Accountability for their article, "Evaluating growth for ELL students: Implications for accountability policies", published last year in *Educational Measurement: Issues and Practice*.

**Robert K. Gable** from Johnson & Wales University received a "Distinguished Reviewer" award from the Buros Center for Testing. Since the Ninth Mental Measurements Yearbook was published in 1985 through the Nineteenth Mental Measurements Yearbook published in 2014, reviews have appeared in six volumes. The award "recognizes longstanding commitment to improving the science and practice of testing."

## Call for Nominations for the Leo D. Doherty Memorial Award

The Leo D. Doherty Memorial Award is given to a longstanding NERA member who exemplifies the qualities that Leo Doherty brought to NERA members, his colleagues, and students over his career. The award, instituted by the NERA Board of Directors in 1981, honors the memory of Leo Doherty. He was instrumental in the development and growth of NERA as a professional association for educational research. His leadership qualities, which were both ethical and humane, encouraged others to pursue and achieve their goals. Thus, this award is presented to NERA members who have exhibited outstanding leadership and service to our organization.

The Leo D. Doherty Award Committee for 2014 strongly encourage nominations for this award. Nomination letters should be sent as an email attachment to **Kristen Huff** at [khuff@mail.nysed.gov](mailto:khuff@mail.nysed.gov) no later than **June 30, 2014**. Nomination letters should explicitly name the nominee and offer a concise and compelling case for the candidate in terms of their leadership and service to NERA. Inquiries regarding this award may also be sent to Kristen Huff at the previous email address. Also please check the NERA website ([www.nera-education.org](http://www.nera-education.org)) for information on NERA Awards.





## The Graduate Lounge

Kristen Smith  
*James Madison University*

**Our Mission:** The mission of the Graduate Student Issues Committee (GSIC) is to support the involvement and professional development of NERA graduate student members and to reach out to new graduate students in an effort to increase diversity of institutions represented at NERA.

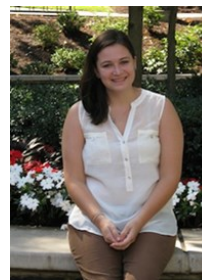
**New Members:** The Graduate Student Issues Committee (GSIC) has elected two new members: Heather Harris and Kate Pinder! Welcome to the GSIC Heather and Kate!



**Heather Harris**

([harrishd@dukes.jmu.edu](mailto:harrishd@dukes.jmu.edu)) is a first-year student in the Master's program in Psychological Sciences with a concentration in Quantitative Psychology at James Madison University. Her current apprenticeship research includes a comparison

of propensity matching methods to investigate levels of academic engagement of traditionally underrepresented students as they transition into higher education. She is serving her first year on the GSIC.



**Kate Pinder**

([pinderke@dukes.jmu.edu](mailto:pinderke@dukes.jmu.edu)) is a first-year student in the Master's program in Psychological Sciences with a concentration in Quantitative Psychology at James Madison University. Her research interests include instrument development,

reliability, and factor analysis. This is her first year serving on the GSIC.

**Summary of Results from the 2013 NERA Graduate Student Survey:**

This year, we received 13 responses to the GSIC survey. The feedback we received on the survey is helping us plan the GSIC sponsored in-conference sessions for the 2014 conference and the GSIC student social. Here are a few highlights from the survey:

- We received positive feedback about both GSIC in-conference sessions: "Navigating the Publication Process;" and "Where is the Field Going and How Do I Get There?"
- Students suggested that the GSIC continue to devote at least one session to general topics such as obtaining a job, publishing, and navigating the field.
- We also received positive feedback about the GSIC student social. Students felt this was a great opportunity to interact with other graduate students.

**GSIC Call for New Members:**

Serving on the GSIC is a great way to get involved with NERA and build relationships with other graduate students! Responsibilities include collaborating with students from various institutions to plan GSIC sponsored in-conference sessions and the GSIC student social. New members are selected each year after the NERA Conference.

**For more information on how to apply and get involved, please contact:** [neragraduatestudents@gmail.com](mailto:neragraduatestudents@gmail.com).

Like us on Facebook!



<https://www.facebook.com/neragsic>

# COLLEGE of EDUCATION

University of Massachusetts Amherst

The College of Education and its Department of Educational Policy, Research and Administration are proud to be platinum sponsors of the 2013 NERA conference.



Enriching Education throughout the Commonwealth and the World



## Department of Psychology

### Master of Arts in Psychology

#### Mental Health Counseling Concentration

Completion of the mental health counseling track is the first step toward fulfillment of a Massachusetts Mental Health Counselor License.

#### School Guidance Counseling Concentration

Completion of the course of study for school guidance counselors offers students the opportunity to apply for Massachusetts certification as guidance counselors.

### Master of Arts in Applied Behavior Analysis

The core courses in Applied Behavior Analysis have been approved by the Behavior Analysis Certification Board (BACB) as meeting the coursework requirements for eligibility to take the Behavior Analysis certification exam. In addition students are required to complete a practicum each semester while enrolled in the program.

The department of psychology at Westfield State University also offers a certificate program in Applied Behavior Analysis.

Westfield  
STATE UNIVERSITY

Founded 1838

For more information:  
Email [PHeick@westfield.ma.edu](mailto:PHeick@westfield.ma.edu)  
Tel (413) 572-5376



## *The NERA Researcher*

Elizabeth Stone, Treasurer  
Rosedale Rd. MS-09-R  
Princeton, NJ 08541



*The NERA Researcher* | Volume 52 | Spring 2014 | [www.nera-education.org](http://www.nera-education.org)